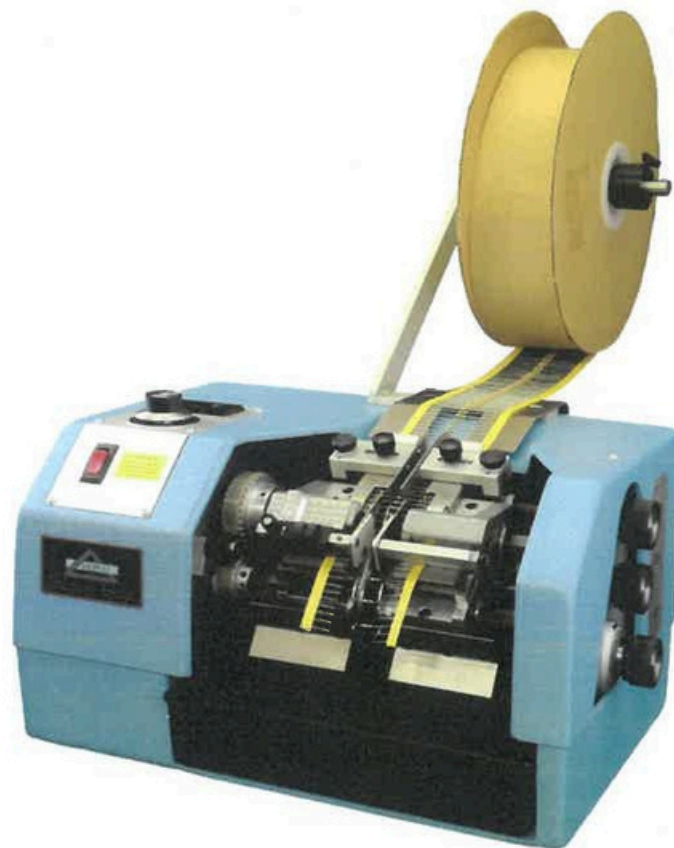


HEPCO

Quality Lead Cutting and Forming Equipment



Bulk Radial Lead Cutting

HEPCO Model 1500-1

Radial Lead Trimming Machine

For Components with In-Line Leads

- Semi-Automatic
- For In-Line Leads
- Smooth Vibratory Feed
- Clean, Quiet Shear
- Incredible Blade Life
- THE Industry Standard

1500-1 for 1" Body Height

1500-SP2 for 2" Body Height



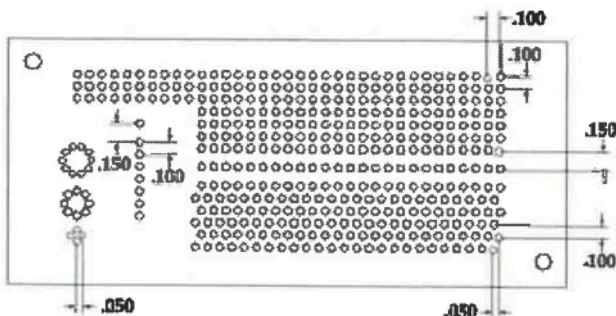
HEPCO Model T3800-1

Heavy-Duty Pneumatic Lead Shear

- Large-Diameter Cylinder
- Large Shear Area
- Advanced Blade Geometry
- Highest Quality Materials
- Custom Patterns Available
- Connectors, Transistors, Coils, More

Model T3800-1 1.9" x 3.9" Shear Area

Model T3800-1W 1.9" x 5.9" Shear Area



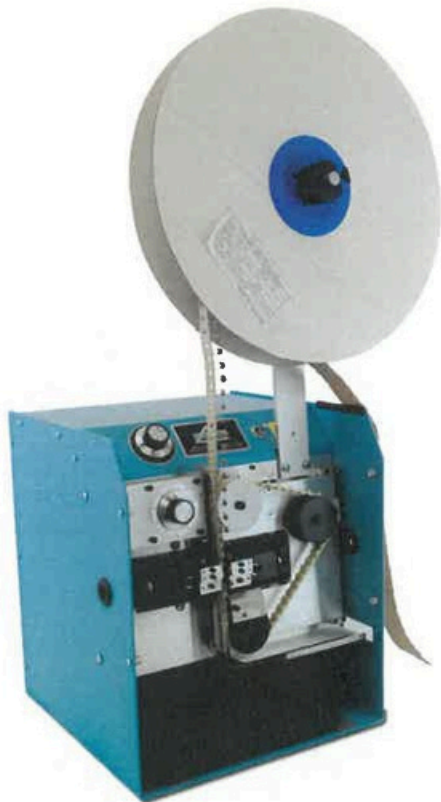
T3800-P1 Shear Plate

Radial Taped-Component Lead Cutting

HEPCO Model 1700-2

Cut-Only Machine

- Dial-Adjustable Cut Length
 - Fast- Up to 85,000 Parts per Hour
 - Reel or Ammo-Pack Fed
 - Large-Diameter, Long-Life Blades
- .500" Pin Belt Included
Low-Cost 15mm Belt Kit Available



HEPCO Model 1800-1

Cut-Only or Cut & Form

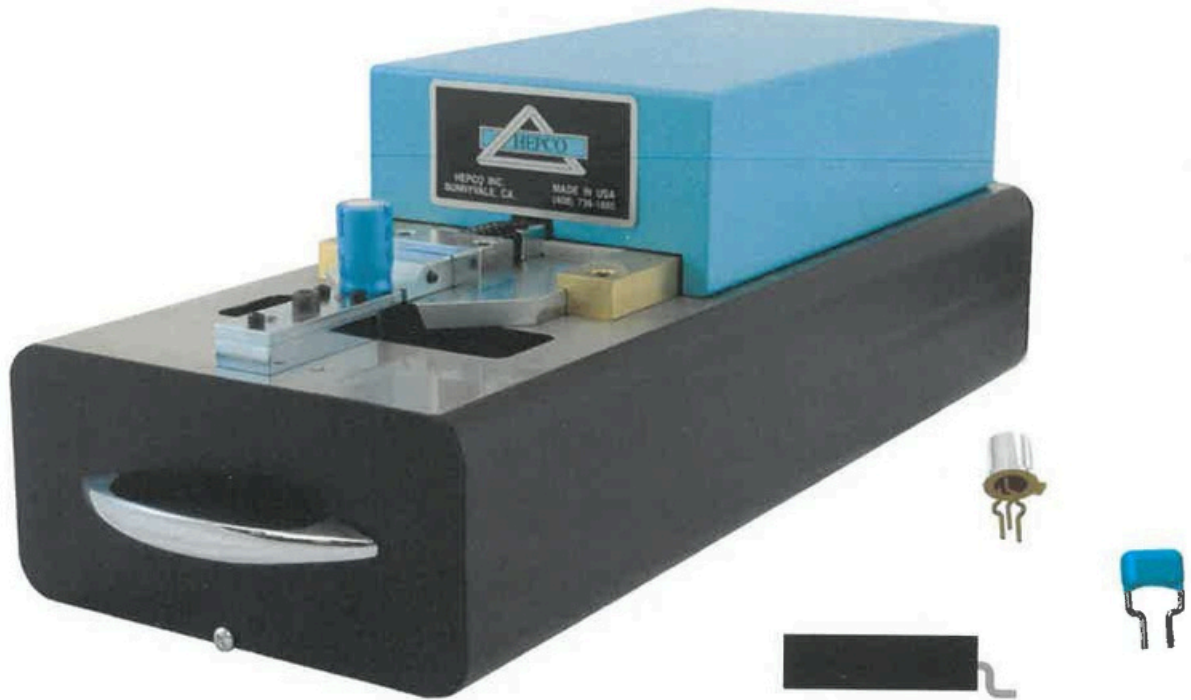
- Fast, Simple Die Changes
- Dial-Adjustable Form Position
- Consistent Cut Length- Die Controlled
- Up to 12,000 Parts per Hour

Variety of Standard Dies Quickly Available
Custom Dies Designed to Customer Spec



Basic Preform Machine

HEPCO Model 3100-1



- Extremely Versatile Pneumatic Lead Cut & Form Machine
- Dies Easily Interchangeable via 2 Screws
- Steel Base Provides Stability and Durability
- Hardened Steel Tooling
- HUGE Library of Designs
- Many Industry-Standard Designs In Stock
- Tooling Made to Protect Components
- Custom Dies Made to Meet Customer Component Sketches

Universal Automated Cut & Form System

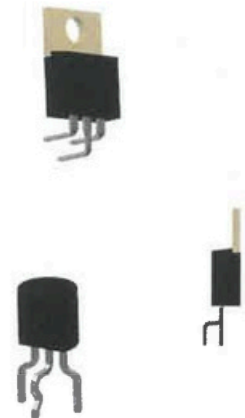
HEPCO Model 6700-1

For Radial Components with
Consistent Body Size

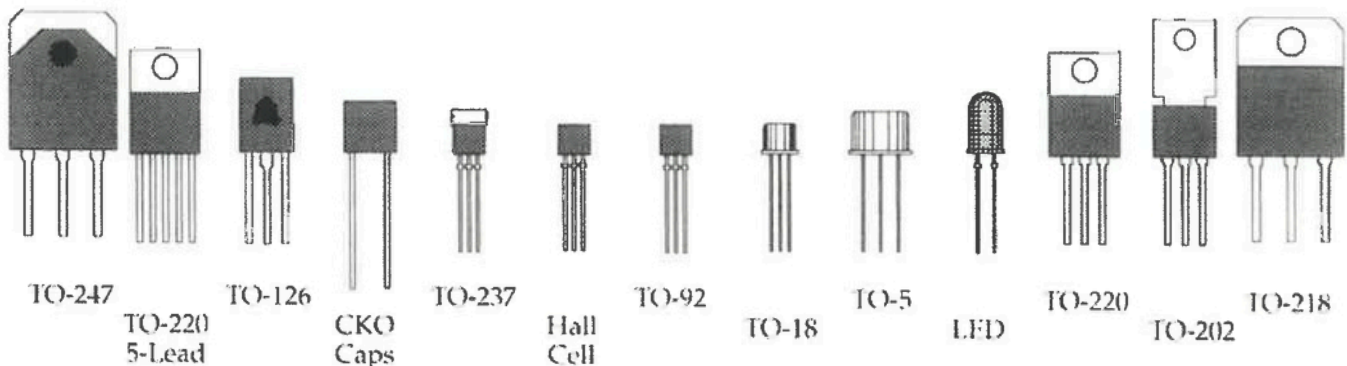
- Simple to Use
- Components Enter Track/Shuttle
- Track/Shuttle Indexes the Component Through the Machine
- Dies Timed to Track/Shuttle
- Custom Die Slide for Extreme Accuracy and Durability
- Hand-Fed, Tube-Fed, or Bowl-Fed

Easy to Change Over

- 2 Screws for Track/Shuttle
- 2 Screws for the Dies



One Machine Does It All



Axial Lead Cut & Form

HEPCO Model 8400

8400-1 For .015" to .040" Diameter Leads

8400-1L For .030" to .055" Diameter Leads

Most User Friendly Machine Available

Step 1 - Dial Lead Spacing

Reading shows on digital dial in .001" increments

Step 2 - Clamp Body in Calibrator Jaws

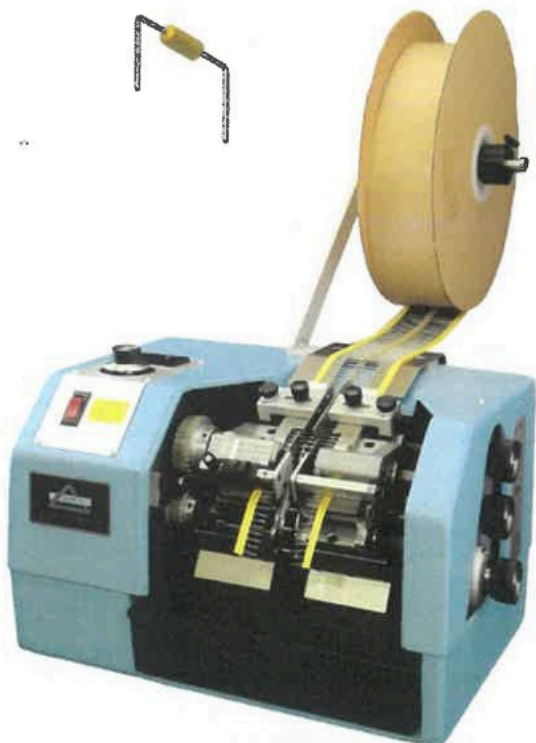
Offsets scale to show below-body dimension

Step 3 - Dial Cut Length

Reading on scale in mm or inches

Step 4 - Dial Body Clearance

Body fits between two stainless guides



Knob-Adjustable - No Dies Used

Roller Forming - No Nicking

Clamps Leads Between the Body and the Bend

Flexing Rollers Eliminate Lead Diameter Adjustment

Self-Honing Rotary Blades for Clean Cut

Phenomenal Blade Life

Efficient Walking-Beam Loose Parts Feeder

Loose Feeder Adjusts Automatically with the Machine

DIP Lead Cut & Form Systems

DIP Lead Cutters

- HEPCO DIP Cutters Use Toothed Rotary Blades
- Clean Shear
- Very Long Life Blades
- Continuous Feed - No Complicated Stop/Start

C7600-ACT Quickly converts between .300", .400", and .600"
Most versatile solution
Includes Conversion Kit with all tooling

7600-nACT Dedicated cut length and DIP size
Least expensive alternative

7800-nACT Dedicated DIP size
Knob-adjusted cut length with digital readout



DIP Lead Formers

- Fixed, Resilient Form Rollers
- Consistent, Accurate Result
- Fully Tighten Rollers and You're Set
- Guide Rails Keep the Form Centered
- Continuous Feed - No Stop/Start



7900 Series Convertible .300", .400", .600" DIPs
Fast Changeover

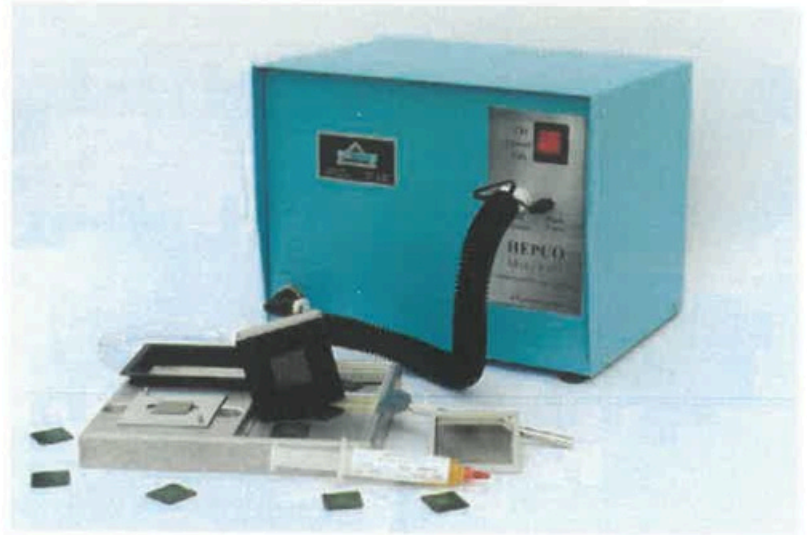
7700 Series Dedicated to One Size

LL Series Knob Adjusted for Component Body Thickness

LFA Series Belt Drive Compensates for Body Thickness

BGA Solder Sphere Placement

- The Model 9400 operates using a self-contained vacuum system to secure the BGA component while transferring the desired pattern of solder spheres in a full array.
- Alignment is achieved through precision pins and specific tooling for ease of use, repeatability, and accuracy in sphere placement.
- Repeatable process control to insure coplanarity and uniformity.
- Fits virtually all BGA layouts and sphere sizes.
- Self-contained system, no additional air/vacuum required.
- Ideal for Lower Volume Manufacturers, Rework, and Prototyping.



Additional KIT setups

- Single or multiple component capabilities.
- Custom tooling available.
- Complete set-up achieved in seconds!
- Very minimal operator training necessary.
- Send your drawing or a sample to [HEPCO's Engineers](#)



Quality Lead Cutting and Forming Equipment

www.hepcoblue.com

150 San Lazaro Ave., Sunnyvale, CA 94086
Phone: (408) 738-1880 Fax: (408) 732-4456