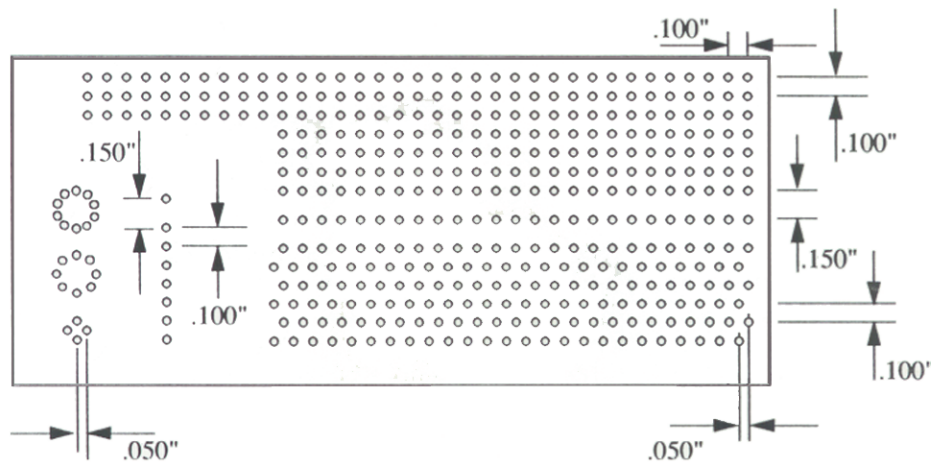
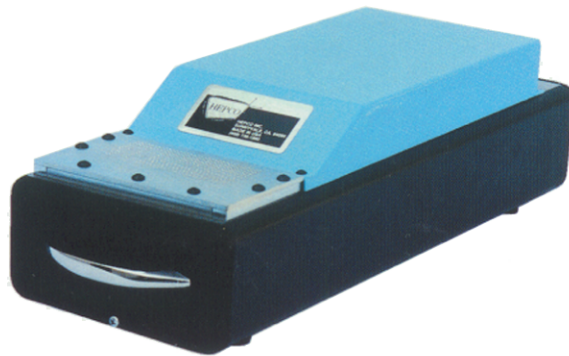


MODEL T-3700-1

Radial Lead Shear Machine

The HEPCO Model T3700-1 is a Heavy-Duty Shear machine for the majority of radial-leaded components, including Connectors, Transistors, Coils, Trimpots, DIP ICs and Capacitors. The steel frame and stainless steel cylinder, coupled with the high-flow valves allow for quick, clean shearing of leads and a tremendous machine life. A large shear area (1.9" x 3.9") allows for a standard shear plate to accommodate the majority of shear requirements. Custom plates with patterns to customer specifications are also available. The blades feature hardened, high-carbon steel and unique geometries to provide the long life and clean cut required in your most strenuous applications.



T3700-P1 Standard Shear Plate

Specifications

Power: 70-100 PSI Compressed Air
 Volume: 0.1 CFM Max
 Weight: 30 Pounds
 Size: 8" Wide x 8" High x 16" Long

Shear Plate Information

T3700-P1 Standard Plate (per Pattern Above) .120" Cut Length
T3700-P1ADJ Adjustable Set (per Pattern Above)
 .100"-.150" in .010" Increments

Custom Shear Plates Available to Customer Specifications.